

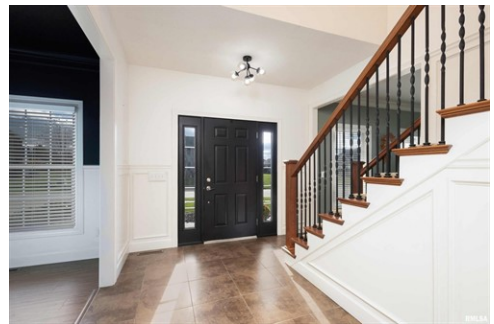


\$ 599,900



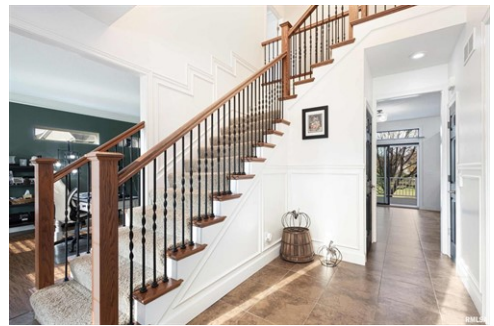
3180 S 22nd Avenue Ct, Eldridge, IA 52748

- » Beds: 5 | Baths: 4 Full, 1 Half
- » MLS #: QC4258177
- » Single Family | 3,807 ft² | Lot: 29,621 ft² (0.68 acres)
- » More Info: [3180S22ndAvenueCt.IsForSale.com](https://www.3180S22ndAvenueCt.IsForSale.com)



Rich Bassford CRS., GRI.
 Melissa Greer, Amanda
 DuPrey, Rob Bermes, Tim
 Holevoet, Leann Noack and
 J.C. Brenny
 (309) 215-9400 (The Bassford
 Team)
 (309) 797-5800 (Office)
info@thebassfordteam.com
<https://www.richbassford.com/>

RE/MAX Concepts
 4555 Utica Ridge Road
 Bettendorf, IA 52722
 (309) 215-9400



Cancel your plans because you MUST see this stunning 5-bed, 4.5-bath, 3-car garage home in Eldridge! This award-winning Terry Knutson 2-story house has custom features & was designed for both luxury & comfort. Sitting on a 3/4 acre lot, this residence is highlighted by its curb appeal & attractive, low-maintenance landscaping. Once inside, details such as crown molding, hardwood floors, & transom windows add a touch of elegance. The kitchen, with its under-cabinet lighting & stainless steel appliances, is open to an informal dining area & living room. Sliders lead you out to a composite deck. A convenient mudroom, laundry room & a half bath are off to the side. Upstairs you'll love the primary bedroom & en suite with its open shower, separate jetted tub, & spacious walk-in closet! 3 more bedrooms are down the hall. The finished basement offers a rec room, a built-in wet bar, a 5th bedroom, & much more! The backyard features a stone patio with a built-in firepit & a natural stone sitting wall. Conveniently located near I61, this home offers easy access to major routes while maintaining a tranquil suburban lifestyle. Don't miss the opportunity to make this exceptional home your own!

